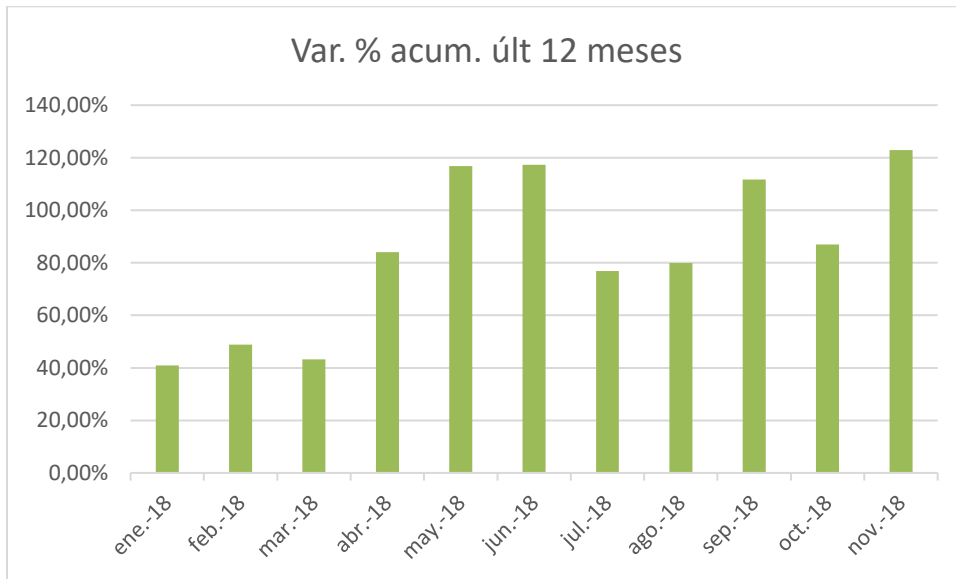
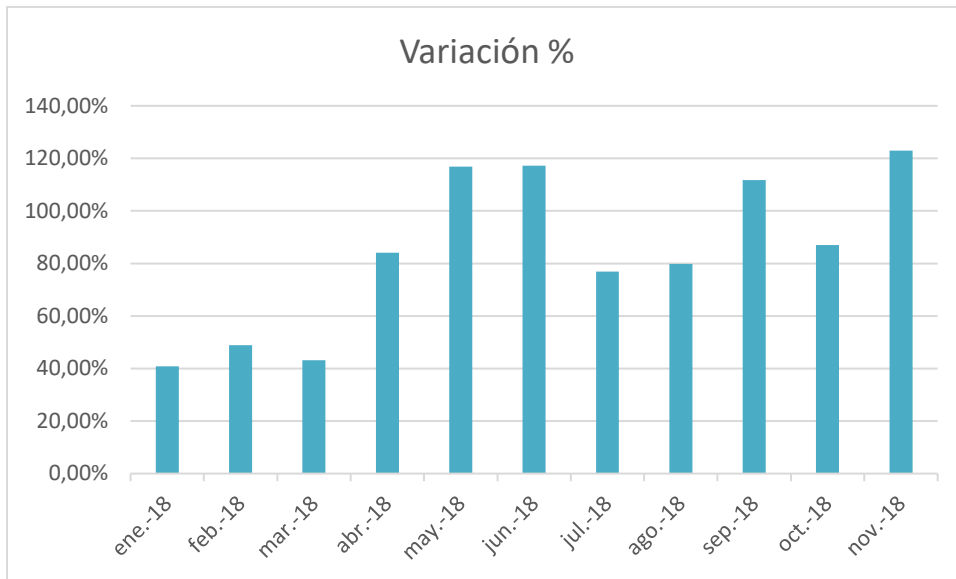


CENDAS-FVM (Centro de Documentación y Análisis Social de la FVM: Canasta Básica Familiar (CBF))

Mes- Año	Monto en Bs. S	Variación Bs. S	Variación %	Var. acum % del año	Var. % acum. últ 12 meses
Ene- 18	353,93	102,69	40,88%	40,88%	4.152,60%
Feb- 18	526,81	172,88	48,85%	109,69%	5.609,89%
Mar-18	754,46	227,65	43,21%	200,30%	6.959,98%
Abr-18	1.388,56	634,10	84,05%	452,69%	11.337,68%
May-18	3.011,38	1.622,83	116,87%	1.098,64%	21.012,32%
Jun-18	6.542,15	3.530,76	117,25%	2.504,00%	37.538,55%
Jul-18	11.572,53	5.030,38	76,89%	4.506,27%	56.542,47%
Ago-18	20.817,13	9.244,60	79,88%	8.185,94%	70.748,08%
Sept-18	44.079,02	23.261,89	111,74%	17.444,98%	112.891,95%
Oct-18	82.415,82	38.336,80	86,97%	32.704,36%	147.225,81%
Nov-18	183.715,22	101.299,40	122,91%	73025,0 %	132.227,6 %



Actualizado al (02/01/2019)